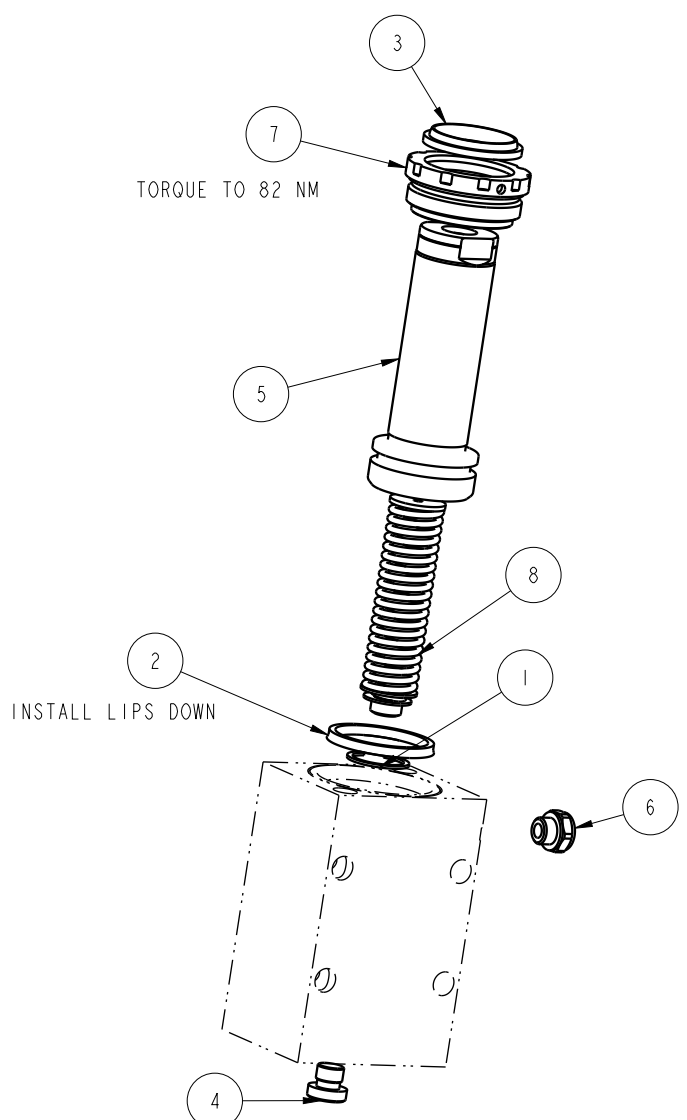



NO	QTY	PART NO	DESCRIPTION	STD SEAL KIT	FKM SEAL KIT	SPRING KIT
1	1	23050013	SNAP RING, INTERNAL			
2	1	39011028	SEAL, BEVEL, 1-5/16 X 3/32 X 1-1/2	X	39012015	
3	1	39050020	WIPER, SNAP-IN, (1-1/8)	X	X	
4	1	43068004	PLUG, 1/8 BSPP			
5	1	48011502	PISTON, CYL, 39.9 kN, 51 STRK			
6	1	49001904	BREATHER, 1/8 BSPP			
7	1	82031501	GLAND, CYL, 8800 & 39.9 KN			
8	1	92060006	SPRING PAK, CYL, 8800, 2.0 STRK			X
N/A	N/A	46000030	KIT, SEAL, BB, 17,8kN, SA	NOTED	N/A	N/A
N/A	N/A	6V200115	KIT, SEAL, BB, 17,8kN, SA, FKM	N/A	NOTED	N/A
N/A	N/A	46100042	KIT, SPRING, BB, 39,9 kN, 38,1 STRK	N/A	N/A	NOTED

C 1



- 3. SPRING PAK AND RETAINING RING ARE INCLUDED IN THE SPRING KIT.
- 2. ALL SEALS, O-RINGS, AND WIPERS ARE INCLUDED IN THE STANDARD OR FKM SEAL KIT.
- 1. APPLY LUBRICANT TO ALL SEALS PRIOR TO ASSEMBLY (DO NOT USE SILICONE TYPE LUBRICANTS).

NOTE:

<b>PARTS LIST</b>	 <b>VEKTEK</b> VEKTEK, INC. 1334 E. SIXTH AVE. P.O. BOX 625 EMPORIA, KS. 66801 U.S.A.
	<b>PARTS LIST, BB, 39,9 KN, SA</b>
ASSEMBLIES AFFECTED	SIZE <b>A</b>
42-0110-14	<b>MPLV2091</b>
42-0110-14F	REV <b>C</b>

C	4627	RELEASE	RLK	2/23/22
REV	IN ACCORDANCE WITH ECN	EFFECTIVE DATE	REVISED BY	DATE
DRW BY:	ROMINE	<b>DRAWING STATUS: Released</b>		
DATE:	04-10-08	PRODUCTION APPROVED FOR RELEASED STATUS ONLY		

SHEET 1 OF 1